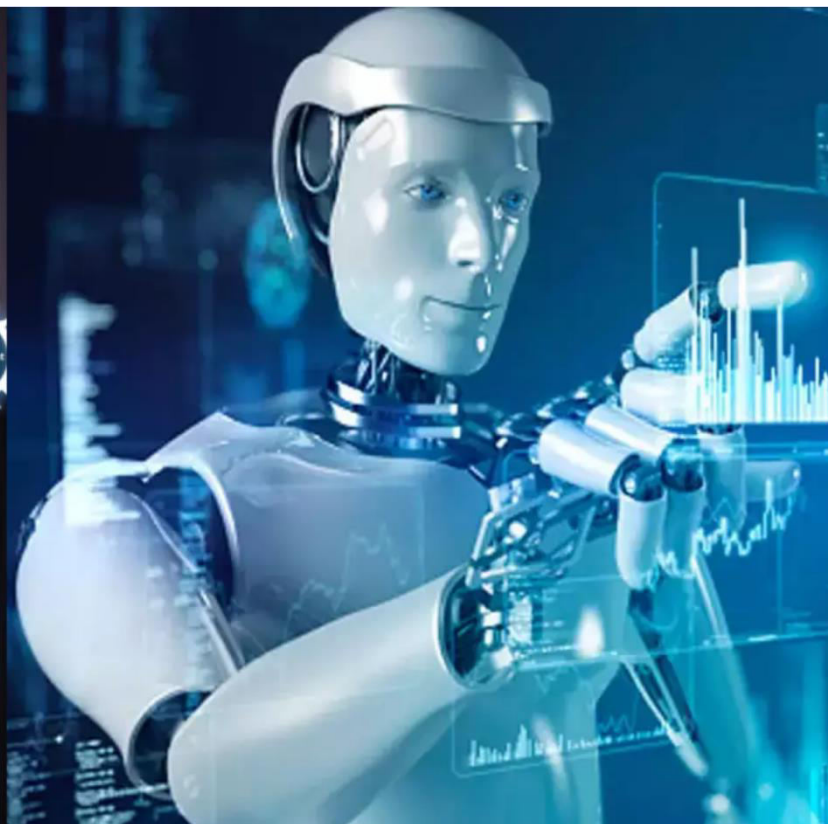




# International Journal of Innovative Research in Science Engineering and Technology (IJIRSET)

*(A Monthly, Peer Reviewed, Refereed, Scholarly Indexed, Open Access Journal)*



**Impact Factor: 8.699**

**Volume 14, Issue 4, April 2025**

# The Role of ETL in Enhancing Shipping Quality and Efficiency

Dhamotharan Seenivasan

Architect, Mphasis, Plano, Texas, USA

**ABSTRACT:** In today's fast-paced logistics environment, data is essential for making informed decisions and maintaining a competitive edge. ETL (Extract, Transform, Load) processes play a vital role in enhancing the quality and efficiency of shipping operations by consolidating data from multiple systems into a unified platform. Through ETL, companies can clean, standardize, and analyze data to gain real-time insights into key performance indicators such as on-time delivery, transit times, and shipping costs. This enables better planning, quicker issue resolution, and improved customer satisfaction. The article explores how ETL technology drives smarter, more efficient shipping operations across the supply chain.

**KEYWORDS:** ETL (Extract, Transform, Load), Shipping Efficiency, Logistics Data Integration, Shipping KPIs, Real-Time Analytics, AI in Supply Chain

## I. INTRODUCTION

The shipping and logistics industry has undergone a significant digital transformation in recent years. With the rise of e-commerce, just-in-time delivery models, and global supply chains, shipping companies are under immense pressure to deliver faster, cheaper, and more reliably. To meet these demands, data has become a cornerstone of daily operations. Every step in the shipping process—receiving an order, assigning shipments, managing inventory, scheduling deliveries, tracking vehicles, and handling returns—generates valuable data. This data helps companies monitor performance, predict delays, reduce costs, and provide better customer service. For example, real-time shipment tracking data allows customers and businesses to stay informed about delivery status, while historical shipping data is used to optimize routes and delivery schedules.

### 1.1 Challenges in Managing Data from Multiple Systems

Despite the abundance of data, one of the most persistent challenges in the industry is the lack of integration among different data systems. Logistics operations typically involve a variety of software platforms such as:

- Tracking systems to monitor shipments in real time
- Warehouse Management Systems (WMS) to manage inventory and storage
- Transport Management Systems (TMS) to coordinate shipping logistics
- Customer Relationship Management (CRM) systems to handle customer interactions
- Enterprise Resource Planning (ERP) systems for financials and overall planning

These systems are often developed by different vendors, use different data formats, and operate independently. As a result, data is scattered, inconsistent, and difficult to access holistically. Teams may have to manually pull reports from different platforms, which is time-consuming and prone to error. This siloed data environment leads to delayed decision-making, inefficient operations, and missed opportunities for optimization.

### 1.2 Introduction to ETL and Its Relevance

This is where ETL (Extract, Transform, Load) processes become essential. ETL is a data integration approach that allows organizations to:

- Extract data from various sources (e.g., WMS, CRM, tracking tools)
- Transform it by cleaning, standardizing, and formatting it for analysis
- Load it into a centralized system like a data warehouse or analytics platform

By unifying and organizing data, ETL enables shipping companies to gain a complete, accurate, and real-time view of their operations. Decision-makers can analyze trends, track key performance indicators (KPIs), and respond quickly to changes or disruptions. ETL also lays the foundation for more advanced capabilities like predictive analytics, automated alerts, and machine learning applications.

In essence, ETL acts as the backbone of a data-driven shipping strategy. It breaks down data silos, improves data quality, and ensures that the right people have access to the right information at the right time ultimately leading to greater efficiency, reduced costs, and improved service delivery.

The logistics and shipping sector is built on the flow of goods, but behind that movement is an even more critical flow of data. Every shipment, delivery, inventory update, and customer interaction generates data that must be collected, interpreted, and acted upon. However, this data often comes from a wide variety of sources and systems that don't naturally communicate with each other. This is where ETL (Extract, Transform, Load) becomes an ideal solution.

## II. HOW ETL ENHANCES SHIPPING QUALITY AND EFFICIENCY

Efficient and high-quality shipping operations rely on the ability to make fast, informed decisions based on accurate and up-to-date data. However, data in the logistics ecosystem is often fragmented across various systems each serving different purposes such as order management, warehouse tracking, transport coordination, or customer service. ETL (Extract, Transform, Load) plays a transformative role by turning disconnected, raw data into a structured and unified resource. Here's how ETL enhances both shipping quality and operational efficiency:

### 2.1. Centralizing Data from Multiple Platforms

Logistics companies use a range of specialized systems:

- CRM (Customer Relationship Management) for managing customer interactions
- WMS (Warehouse Management System) for tracking inventory and fulfillment
- TMS (Transportation Management System) for managing routes, carriers, and shipping schedules

Each system generates important data, but when used in isolation, they provide only partial visibility. ETL consolidates this information by extracting data from each platform, transforming it into a standard format, and loading it into a centralized data warehouse or dashboard.

#### Benefits:

- Provides a holistic view of shipping operations
- Eliminates silos and fosters collaboration between departments
- Enhances cross-functional reporting and analysis

### 2.2. Real-Time Data Availability and Integration

In logistics, delays and inefficiencies often occur because decision-makers are working with outdated or incomplete information. Modern ETL tools support real-time or near-real-time data integration, allowing companies to:

- Monitor shipments as they move
- Detect delays or disruptions as they happen
- Trigger alerts or notifications for time-sensitive issues

#### Benefits:

- Faster response to incidents or exceptions
- Improved transparency for customers and partners
- Smoother coordination across supply chain nodes

### 2.3. Reducing Errors Through Automated Data Cleansing

Dirty or inconsistent data can lead to costly errors such as:

- Wrong delivery addresses
- Mislabeling of inventory
- Duplicate shipment records
- Inaccurate billing or invoicing



ETL includes powerful data cleansing and validation steps that identify and fix these issues automatically during the transformation phase. For example, it can:

- Standardize address formats
- Remove duplicate entries
- Validate numerical fields (e.g., weight, cost, quantity)
- Fill in missing values where appropriate

**Benefits:**

- Fewer shipping delays caused by data mistakes
- Lower return and complaint rates
- Increased trust in operational data

**2.4. Supporting Proactive Decision-Making and Exception Handling**

By consolidating clean, real-time data into a centralized location, ETL enables advanced analytics and intelligent dashboards. This empowers operations managers to:

- Identify trends before they become problems (e.g., a rise in delayed deliveries in a certain region)
- Set automated rules to detect and flag anomalies (e.g., shipment stuck at customs for too long)
- Simulate scenarios and optimize resources (e.g., reassigning drivers based on real-time route delays)

**Benefits:**

- Transforms operations from reactive to proactive
- Reduces the time and cost of handling exceptions
- Increases customer satisfaction by preventing issues before they escalate

**III. SHIPPING KPIS IMPACTED BY ETL**

Key Performance Indicators (KPIs) are vital metrics used to measure the effectiveness, accuracy, and overall quality of shipping operations. ETL processes play a crucial role in supporting and improving these KPIs by ensuring that data from multiple systems is consolidated, clean, and actionable. Here's a detailed look at how ETL impacts several core shipping KPIs:

**3.1. On-Time Delivery Rate (OTD)**

OTD is the percentage of shipments delivered on or before the promised delivery date.

ETL integrates real-time tracking data from transportation management systems (TMS), carrier APIs, and order processing tools. By consolidating this data, ETL enables accurate monitoring of each shipment's progress and calculates delivery timelines automatically. This allows for:

- Real-time updates on potential delays
- Better coordination with carriers
- Accurate reporting of delivery performance

**Impact:**

Improved visibility and tracking accuracy increase the likelihood of on-time deliveries and help logistics teams take corrective actions early.

**3.2. Order Accuracy**

Order accuracy is the percentage of orders delivered without errors in items, quantity, or documentation.

ETL transforms and validates data from warehouse management systems (WMS), inventory tools, and order management platforms. It ensures consistency across systems by:

- Cross-verifying product SKUs, barcodes, and order quantities
- Highlighting mismatches or inconsistencies before shipment
- Automatically flagging incomplete or conflicting data

**Impact:**

Reduced picking/packing errors and improved customer satisfaction due to accurate, error-free deliveries.

**3.3. Transit Time**

Transit time is the average time taken for a shipment to travel from origin to destination.

By aggregating route and timestamp data from GPS systems, carrier logs, and tracking platforms, ETL provides a full picture of the shipping journey. It helps:

- Analyze actual vs. estimated transit times
- Identify frequent bottlenecks or delays on specific routes
- Support predictive models to optimize delivery schedules

**Impact:**

More efficient route planning, reduced delivery time, and better management of customer expectations.

**3.4. Cost per Shipment**

Cost per shipment is the total cost incurred to deliver a single order, including transportation, labor, packaging, and overhead.

ETL merges financial data, shipping invoices, and operational metrics to calculate true shipping costs. It helps identify:

- Hidden fees or avoidable surcharges
- Cost differences between carriers or delivery zones
- Inefficiencies in packaging, warehousing, or routing

**Impact:**

Better cost control, smarter carrier selection, and higher profitability through reduced operational waste.

**3.5. Customer Satisfaction Score (CSAT)**

CSAT is a customer's rating of their overall satisfaction with shipping experience.

ETL brings together data from customer feedback systems, help desk tickets, delivery tracking, and order accuracy metrics. This unified view allows companies to:

- Correlate customer complaints with specific delivery issues
- Detect trends in dissatisfaction early
- Provide faster and more informed responses to inquiries

**Impact:**

Enhanced customer service, more accurate root cause analysis, and a noticeable improvement in customer experience.

**3.6. Return Rate**

Return rate is the percentage of shipments that are returned by the customer due to defects, wrong items, or dissatisfaction.

ETL processes track and analyze return data alongside order accuracy, product reviews, and customer service logs. This helps identify:

- Patterns in return reasons (e.g., damaged goods, incorrect items)
- High-return products or regions
- Operational issues causing frequent returns

**Impact:**

Reduced return rates by addressing the root causes proactively, saving costs and improving customer trust.

**IV. FUTURE TRENDS AND ETL EVOLUTION IN SHIPPING**

The logistics and shipping industry is rapidly evolving, driven by technological advancements and growing demands for efficiency, speed, and transparency. As companies increasingly rely on data to optimize operations, ETL processes are evolving to keep up with these trends. The future of ETL in the shipping industry is shaped by real-time data integration, artificial intelligence (AI) and machine learning (ML), and Internet of Things (IoT) integration. Here's a closer look at these emerging trends:

**4.1. Introduction of Real-Time ETL (Streaming ETL)**

Traditional ETL processes are batch-based, meaning data is collected, transformed, and loaded into a centralized system in periodic intervals (e.g., hourly, daily). While this approach has been effective in many cases, the increasing demand for real-time insights is pushing the industry towards streaming ETL.

Streaming ETL refers to continuous data integration, where data is processed and loaded into the system in real-time as it's generated. This is particularly beneficial in the shipping industry, where operational decisions need to be made quickly based on the most up-to-date information available.

- **Immediate Decision-Making:** Shipping managers can respond to issues like delays, disruptions, or unexpected traffic conditions without waiting for batch processing.
- **Dynamic Routing:** Real-time ETL can feed live tracking data into route optimization tools, allowing for dynamic rerouting of shipments based on traffic conditions, weather, or other factors.
- **Improved Customer Service:** Customers can receive live updates on their orders, improving transparency and satisfaction.

As streaming ETL continues to evolve, shipping companies will be able to gain insights from data as it flows through the system, ensuring faster, data-driven decisions across the supply chain.

#### **4.2. Use of AI/ML with ETL Pipelines**

Artificial Intelligence (AI) and Machine Learning (ML) are transforming industries by enabling systems to learn from data and make predictive decisions. In the context of ETL, AI and ML can be integrated into pipelines to enhance data processing and improve operational outcomes.

AI/ML with ETL Pipelines:

- **Predictive Analytics:** ML algorithms can analyze historical shipping data to forecast delivery times, predict delays, and optimize routes. These predictions can be integrated into ETL pipelines to inform real-time decision-making.
- **Anomaly Detection:** AI algorithms can identify unusual patterns in data, such as discrepancies in inventory levels or unexpected shipping delays, and trigger alerts in real time.
- **Optimization:** Machine learning models can continuously optimize ETL processes, automatically detecting and correcting data anomalies, improving the accuracy and efficiency of the system over time.

Benefits for Shipping:

- **Proactive Decision-Making:** AI/ML helps shipping companies predict disruptions or inefficiencies before they impact operations, allowing for preventive action.
- **Optimized Operations:** ML models help optimize warehouse layouts, inventory management, and transportation routes based on historical trends and predictive data.
- **Customer Satisfaction:** Predictive capabilities improve on-time delivery, accuracy, and personalization, contributing to better customer experiences.

The integration of AI and ML with ETL pipelines is accelerating the shift from reactive to proactive management in the shipping industry, giving companies a competitive advantage in logistics optimization.

#### **4.3. Integration with IoT for Smart Shipping Analytics**

The Internet of Things (IoT) involves the connection of physical devices (e.g., vehicles, containers, sensors, cargo tracking systems) to the internet, enabling real-time data collection and monitoring. In the shipping industry, IoT sensors are used to track conditions such as temperature, humidity, location, and security of shipments, and to monitor the performance of vehicles and equipment.

How IoT Integrates with ETL:

- **Data Collection from Devices:** IoT-enabled devices generate a vast amount of real-time data. ETL processes extract this sensor data, transform it into a usable format, and load it into centralized systems for analysis.
- **Smart Shipping Analytics:** With IoT integration, ETL enables companies to analyze factors like vehicle performance, shipment conditions (e.g., temperature for sensitive goods), and tracking data in real time. This leads to better decision-making on everything from route planning to inventory management.
- **Condition Monitoring:** Sensors embedded in shipping containers or vehicles can alert logistics managers when conditions deviate from optimal parameters (e.g., if a temperature-sensitive shipment rises above the allowed threshold). ETL enables these alerts to trigger actions automatically.

Benefits for Shipping:

- **Enhanced Visibility:** Real-time IoT data integration allows companies to track shipments with more precision, monitor conditions during transit, and ensure the safety of goods.

- **Operational Efficiency:** By monitoring the condition of vehicles, warehouses, and shipments, IoT data can help reduce maintenance costs, improve fuel efficiency, and prevent unnecessary delays.
- **Increased Customer Trust:** Customers gain confidence in the reliability of the shipping process, particularly for high-value or sensitive goods, knowing that their shipments are continuously monitored.

Integrating IoT with ETL will further enhance the capabilities of shipping companies, allowing them to leverage vast amounts of sensor data for smarter logistics decisions.

## V. CONCLUSION

In today's fast-paced and data-driven shipping industry, the need for efficient, accurate, and real-time decision-making has never been more critical. ETL has emerged as a pivotal technology in transforming how shipping companies manage their data. By centralizing and streamlining the integration of data from various systems, ETL enables companies to improve operational efficiency, reduce errors, and enhance service delivery.

ETL's impact on key shipping metrics such as on-time delivery rates, order accuracy, transit time, cost per shipment, customer satisfaction, and return rates is significant. The ability to centralize data from multiple platforms, ensure real-time updates, and clean data automatically enhances decision-making, boosts operational effectiveness, and minimizes costly errors. These benefits ultimately lead to better customer experiences and greater operational profitability.

Looking ahead, the future of ETL in the shipping industry is poised for even more transformative changes. The rise of real-time ETL (streaming ETL), coupled with the integration of artificial intelligence (AI) and machine learning (ML), promises to revolutionize data processing, enabling predictive analytics, route optimization, and automated decision-making. Additionally, IoT integration will provide a wealth of real-time data that can be analyzed through ETL systems, enabling smarter and more agile logistics operations.

By adopting these advanced ETL techniques, shipping companies can not only address existing challenges but also gain a competitive edge in a rapidly evolving market. As data becomes increasingly central to logistics, the integration of ETL with cutting-edge technologies will continue to drive efficiency, innovation, and customer satisfaction. Ultimately, ETL's role in enhancing the quality and efficiency of shipping operations will be pivotal to the ongoing success and growth of the industry in the digital age.

## REFERENCES

- [1] Gadde, Hemanth. "AI-Enhanced Data Warehousing: Optimizing ETL Processes for Real-Time Analytics." *Revista de Inteligencia Artificial en Medicina* 11, no. 1 (2020): 300-327.
- [2] Mondal, Kartick Chandra, Neepa Biswas, and Swati Saha. "Role of machine learning in ETL automation." In *Proceedings of the 21st international conference on distributed computing and networking*, pp. 1-6. 2020.
- [3] Theodorou, Vasileios, Alberto Abelló, Wolfgang Lehner, and Maik Thiele. "Quality measures for ETL processes: from goals to implementation." *Concurrency and computation: practice and experience* 28, no. 15 (2016): 3969-3993.
- [4] Kola, Harish Goud. "Optimizing ETL Processes for Big Data Applications." *International Journal of Engineering and Management Research* 14, no. 5 (2024): 99-112.
- [5] Khan, Bilal, Saifullah Jan, Wahab Khan, and Muhammad Imran Chughtai. "An Overview of ETL Techniques, Tools, Processes and Evaluations in Data Warehousing." *Journal on Big Data* 6 (2024).
- [6] El Akkaoui, Zineb, Alejandro A. Vaisman, and Esteban Zimányi. "A Quality-based ETL Design Evaluation Framework." In *ICEIS* (1), pp. 249-257. 2019.
- [7] Kakish, Kamal, and Theresa A. Kraft. "ETL evolution for real-time data warehousing." In *Proceedings of the Conference on Information Systems Applied Research* ISSN, vol. 2167, p. 1508. 2012.
- [8] Vassiliadis, Panos, and Alkis Simitsis. "Near real time ETL." In *New trends in data warehousing and data analysis*, pp. 1-31. Boston, MA: Springer US, 2008.
- [9] Wahyudin, Agus, Fajar Ciputra Daeng Bani, and Arief Budi Ibrahim. "Development of big data analytics technology on sea freight operational performance using the agile model." *International Journal of Multidisciplinary Approach Research and Science* 2, no. 1 (2023): 216-228.

- [10] Mandala, Nishanth Reddy. "API-based ETL Integration: Enhancing Data Connectivity and Real-Time Data Processing."
- [11] Jampani, Sridhar, Srikanthudu Avancha, Amit Mangal, S. P. Singh, Shalu Jain, and Raghav Agarwal. "Machine learning algorithms for supply chain optimisation." *International Journal of Research in Modern Engineering and Emerging Technology (IJRMEET)* 11, no. 4 (2023).
- [12] Fedyk, Anastassia, James Hodson, Natalya Khimich, and Tatiana Fedyk. "Is artificial intelligence improving the audit process?." *Review of Accounting Studies* 27, no. 3 (2022): 938-985.
- [13] Sithole, Beverley, Sergio Guedes Silva, and Mirjana Kavelj. "Supply chain optimization: enhancing end-to-end visibility." *Procedia engineering* 159 (2016): 12-18.
- [14] Barrientos-Aguilar, Alexis, Javier Gamboa-Cruzado, Reyna López de Montoya, N. Mercedes Ortiz Céliz, Leonidas Asto Huaman, Fernando Sinche Crispin, and Germán Ríos-Toledo. "Transforming Freight Transport with Business Intelligence: A Case Study in the Peruvian Logistics Sector." *Computación y Sistemas* 29, no. 1 (2025): 511-528.
- [15] Mirbagheri, Sharareh. "Leveraging data warehousing and decision support systems for effective supply chain management." In *2023 IEEE 8th international conference on smart cloud (SmartCloud)*, pp. 111-115. IEEE, 2023.
- [16] Borgi, Tawfik, Nesrine Zoghalmi, Mourad Abed, and Mohamed Saber Naceur. "Big data for operational efficiency of transport and logistics: A review." In *2017 6th IEEE International conference on Advanced Logistics and Transport (ICALT)*, pp. 113-120. IEEE, 2017.
- [17] Francis, Navya, and Anooja Ali. "Enhancing Freight Auditing Efficiency: Leveraging Hadoop MapReduce for Logistic Audit Assist." In *International Conference on Recent Trends in Computing*, pp. 69-90. Singapore: Springer Nature Singapore, 2024.





INTERNATIONAL  
STANDARD  
SERIAL  
NUMBER  
INDIA



# INTERNATIONAL JOURNAL OF INNOVATIVE RESEARCH

IN SCIENCE | ENGINEERING | TECHNOLOGY

 9940 572 462  6381 907 438  [ijirset@gmail.com](mailto:ijirset@gmail.com)



[www.ijirset.com](http://www.ijirset.com)

Scan to save the contact details